



P.O. Box 247, 4800 St. Rte. 125  
 West Union, OH 45693  
 Phone: 937-544-2305  
 Toll-free 1-800-283-1846

# Rural Electric Cooperative, Inc.

## Trustees

Charles L. Newman..... President  
 Charles Grimes.....Vice President  
 Kenneth McCann .....Secretary  
 Samuel Bolender     Blanchard Campbell  
 M. Dale Grooms         Stephen Huff  
 Donald C. McCarty Sr.   William Seaman

## Personnel

Bill Swango .....General Manager

Erika Ackley	Rodney Little
Alice Baird	Ronald Lynch
Monica Baldwin	Dave McChesney
August Brooks	Kristina Orr
Rex Chapman	John Polk
Joyce Grooms	David Ralston
Keith Grooms	Jack Ross
Ronald Carl Hanson	Donnie Shoemaker
John Hayslip	Kimberly Smith
David Henry	Gary Tolle
Steve Hoop	Mike Whitley
Dave Kirker	Charlotte Willett
Chris Koenig	

## Pay stations

**Failure to receive your electric bill in no way relieves you, the member, from paying it. If you do not receive your bill, contact the office before the due date and we will issue another.**

**For the convenience of Adams REC members, we have established several ways to pay your bill:**

Pay online at [www.adamsrec.com](http://www.adamsrec.com).  
 Pay by phone at 1-800-809-6352.  
 Pay directly from your bank account.

### Pay at these collection points:

The 5/3 Bank of Southern Ohio  
 Manchester, Peebles, West Union

The First State Bank of Adams County  
 Manchester, Seaman, Winchester,  
 Peebles and West Union

The National Bank of Adams County  
 218 N. Market St., West Union

A Touchstone Energy® Cooperative

## Theft affects all consumers

It seems that theft has risen to epidemic proportions over the past several months. Here at the cooperative, we have experienced increased theft of electric service, as well as illegal entry at substations and theft of copper.

Theft of electricity happens when someone connects a service illegally. Most of the time this happens when someone doesn't pay their bill and their service has been disconnected for nonpayment. They then proceed to reconnect themselves and try to use electricity without the cooperatives knowledge. With the current metering system at Adams REC, the office is alerted if an electric service is reconnected illegally. This not only is against the law but is extremely dangerous and can cause injury or the loss of life. Information from a meter theft is reported to the local sheriff's department and the county prosecutor's office.

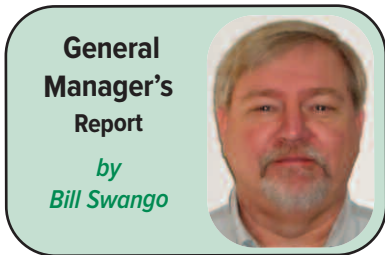
Charges for meter tampering and for any damage that might be associated with the meter are assessed to the responsible party, as well as charges for any electricity used by the illegally connected meter. These charges can amount to as much as \$200 excluding the amount for the electric use.

The high price of metals in today's world has caused the price of scrap copper to increase drastically and has led to substation break-ins and the theft of copper grounds off of poles. This illegal activity is very costly to the cooperative and of course as a member-owned system this is passed on to you as the consumer. Again this type of activity is extremely dangerous and can cause injury or the loss of life.

Substation break-ins not only cost the cooperative for replacing grounds on the equipment, but can cost well in excess of a \$1,000,000 if the substation transformer and voltage regulators are damaged. This has happened in many areas and there have been many cases across the country where people have lost their lives in a substation for a few dollars' worth of copper.

The cooperative has taken steps to prevent some of this illegal behavior by installing security systems in the substations that send an alarm when a substation is breached and has unauthorized entry. We have also begun to replace copper grounds in substations as well as on poles with plated tin wire. This wire has very little value and is a lot harder to cut.

If you see suspicious activity around a substation or someone near electric poles or believe someone is stealing electric service, please contact the cooperative or your local sheriff's department and report it. You may not only be saving your money as a consumer but you may save someone's life.



# This-N-That with more Annual Meeting

BY ALICE L. BAIRD

We received many nice comments about the 2011 Annual Meeting. Thank you! Since so many of you enjoyed the “get together,” I figured it wouldn’t hurt to share a few more pictures with you in *Country Living* magazine.

## We’re looking at winter

Snow will be blowing and freezing temperatures will be upon us soon. Because of where our service territory is located in the rural areas of the counties and in the midst of many wooded areas, the number of outages caused by ice and high winds is greater than anyone would like. However, as I have said before, that is one price we pay to live in such a beautiful part of the country.

Although we do our best here at the cooperative to be prepared for storms and outages, there is really not a lot we can do when an ice or wind storm hits or lightning strikes, except to be there to get our consumers back on as quickly as possible.

We are limited by right-of-way easements as to where and how much we are permitted to cut. Therefore, there will always be the risk of large trees bringing a line down from wind, heavy snow or ice. Ice is something we all dread and its weight on a line strung across a field can be tremendous. 1630002213

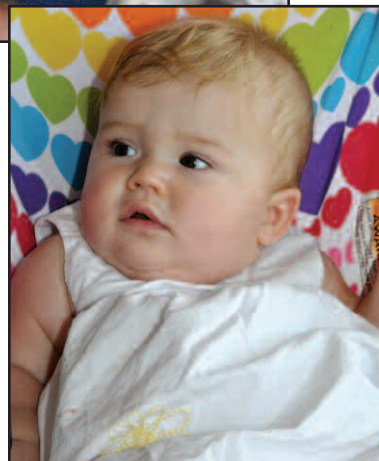
Your best line of defense is to be prepared. If you live in a heavily wooded or remote area, you may want to consider a back-up source of heat such as wood or propane. It would also be wise to invest in a generator in case of prolonged outages. This is especially true if you have someone in

your home that is medically dependent on electric powered equipment. If you do choose to have a gen-



erator installed, please be sure to have it installed correctly to prevent injury or death to our linemen or damage to your equipment or ours.

Please also be aware that an outage may be caused by transmission problems, in which case there is not anything that we can do except to wait until the power supplier has corrected the problem on their side.



Future generation of Adams REC members.

## Veteran’s Day and Thanksgiving

November 11 is Veteran’s Day. Make it a point to thank a veteran for their service.

Please keep in mind that our office will be closed on Thursday and Friday, Nov. 24 and 25, so that our employees can enjoy Thanksgiving with their families and friends. I hope your Thanksgiving is truly blessed and wonderful!

Remember that on Nov. 6, Daylight Saving Time ends. When you set your time back, take a little time



Congresswoman Jean Schmidt joined in the festivities at the 2011 Annual Meeting.

## Hidden account number credit

Find your account number in the LOCAL PAGES (the four center pages of this magazine), then call our office and you will receive a \$20 credit on your electric bill. You must call by the end of the month in which your account number appears.

## Capital credits

Capital credits refunded to the estates of Adams Rural Electric Co-op members for September 2011 totaled \$9,851.24. Estates paid in 2011 total \$77,747.56.

In case of the death of a member of Adams Rural Electric, contact Alice Baird at 937-544-2305 or 1-800-283-1846.

# photos



Members participate in the ACRMC health fair.



Members receive goodie bags and hats and register for door prizes.



to check your smoke alarms and make sure they are in good working order.

As always, if you need information concerning the youth programs, capital credits, or any other questions or comments, please feel free to contact me at the office. Just ask for Alice. Or you may e-mail me at [aliceb@adamsrec.com](mailto:aliceb@adamsrec.com).

**Adams Rural Electric wishes you and your family a wonderful Thanksgiving holiday.**

*As a reminder, our office will be closed Nov. 24 & 25 for Thanksgiving to allow our employees to enjoy the holiday with their families.*



## Veterans Day

Adams Rural Electric thanks all veterans and their families for their sacrifices.

## Stealing electricity, meter tampering are crimes

An Ohio law covering theft of utility service and tampering with utility equipment provides that a person does not have to be seen tampering with a meter to be held responsible for such action.

In addition, in prosecution for a user's reconnecting a device that was disconnected by a utility, such activity is now considered prima facie evidence that the user intended to defraud the utility.

The law defines theft of a utility service as a first-degree misdemeanor if the value of the stolen electricity, plus any utility equipment repair, is less than \$150. It's a fourth-degree felony if the value is more than \$150 or if the offender was previously convicted of the charge. Tampering convictions carry similar penalties.

Tampering is defined "to interfere with, damage or bypass a utility meter, conduit or attachment with intent to impede the correct registration of a meter or the proper function of a conduit or attachments."

Conviction can bring from six months in jail and a \$1,000 fine to five years in jail and a \$2,500 fine.

Meter tampering costs all of us. It costs the cooperative, and it costs you. And it's downright dangerous. If you witness someone tampering with their electric meter, contact your cooperative office. Stealing electricity is a crime, and anyone caught violating the law will be prosecuted.

## MEDICAL CERTIFICATIONS AVAILABLE

Residential consumers of Adams Rural Electric Cooperative, Inc., who are facing termination of service due to nonpayment of their account can apply for a **30-day Medical Certification** in order to retain electric service.

Prior to termination, the consumer must provide proper certification from a health care professional which includes a licensed physician, physician assistant, clinical nurse specialist, certified nurse practitioner, or certified nurse midwife. The health care professional must complete a form provided by Adams REC stating that termination of electric service would be **Especially Dangerous or Life Threatening** to the health of a permanent resident of the premises.

The cooperative will accept no more than two renewal certifications regarding the health of any resident, for a total maximum certification period of ninety (90) days within any 12-month period.

For additional information, please feel free to call the office.

# Adams County area calendar of events

## November

- 11 **Veterans Day Parade** starts at 11 a.m. in West Union.  
Contact Sam Kimmerly at 937-386-0293.
- 25 **Miller's Christmas Tree Farm** — Open daily from 10 a.m. to 5:30 p.m., until Dec. 24.  
Located at 1600 Eckmansville Road. Contact Miller's at 937-544-2220.

## December

- 2 **Manchester Hometown Christmas** at the Manchester Community Building from 6 to 9 p.m.  
Contact Heidi Huron at 937-549-2516
- 3 **Peebles Christmas Celebration** lighting of the Christmas tree and other events starts at 6 p.m.  
Contact 937-587-2417
- 10-11 **Page One-Room School House** Christmas event off Vaughn Ridge Road. From 2 to 4 p.m.  
Contact Mary Fulton at 937-587-2043
- 17 **Adams County Audubon Christmas Bird Count.**  
Contact the Cincinnati Museum Center's Edge of Appalachia Preserve at 937-544-2880.
- 21 **Lighting the Serpent**, 4 p.m. to 8 p.m. Celebrate the Winter Solstice by helping volunteers light over 900 luminary candles outlining the serpent effigy.  
Contact F.O.S.M. at 937-587-3953 (Rain date: Dec. 22)